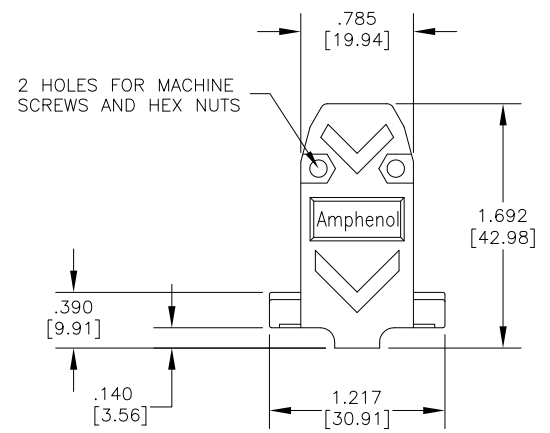
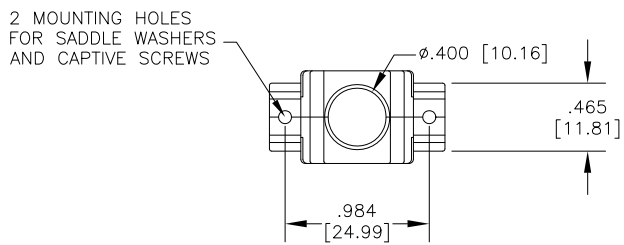
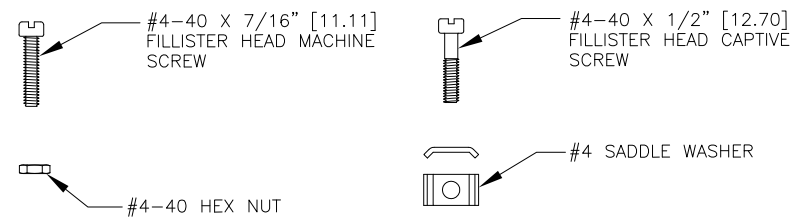
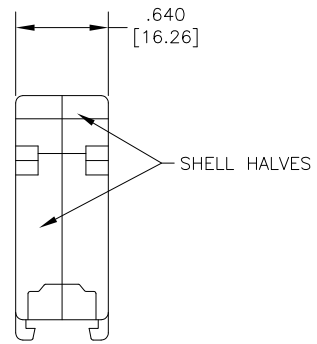


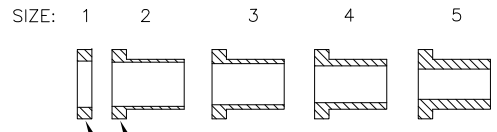
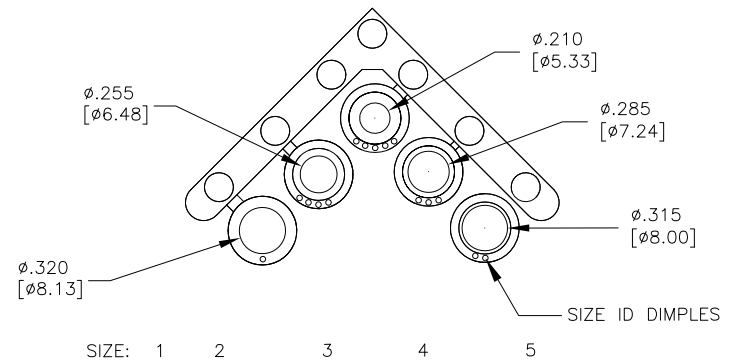
| REVISIONS | | | |
|-----------|-----------------------------|----------|-------|
| REV | DESCRIPTION, ECN, EAR NO. | DATE | APP'D |
| B | PRODUCT DRAWING (EAR 14231) | OCT02/13 | K.L. |



CONNECTOR BACKSHELL



COMPRESSION INSERT TREE



WASHER OR WASHER PORTION OF INSERT

NOTES:

- EACH BACKSHELL KIT CONTAINS 2 SHELL HALVES, 1 COMPRESSION INSERT TREE AND 2 OF EACH HARDWARE ITEM SHOWN.
- BACKSHELL IS SUITABLE FOR SUBMINIATURE D CONNECTOR, E SIZE SHELL (9 POSITION STANDARD CONTACTS OR 15 POSITION HIGH DENSITY CONTACTS).
- COMPRESSION JACKET INSERTS ARE DESIGNED FOR A CABLE DIAMETER RANGE OF .210 [5.33] TO .320 [8.13].
- MATERIALS - ALL MATERIALS ARE RoHS COMPLIANT
SHELL - ABS COMPOUND, UL94HB RATING, NICKEL PLATED
INSERT TREE - BLACK THERMOPLASTIC, 75 DUROMETER
HARDWARE - STEEL, ZINC PLATED, HEXAVALENT CHROMIUM FREE FINISH

ASSEMBLY INSTRUCTIONS:

- SELECT THE TIGHTEST INSERT THAT WILL FIT OVER THE CABLE, AND FEED THE CABLE THROUGH IT, PLACING THE END WITH THE SMALLER OD (THE END WITHOUT THE WASHER) TOWARDS THE CONNECTOR.
- TERMINATE THE CABLE WIRES TO THE CONNECTOR.
- CUT THE JACKET, FOLD THE SHIELDING BACK OVER THE OUTSIDE OF THE INSERT AND CUT IT JUST SHORT OF THE WASHER.
- INSTALL SADDLE WASHERS, CAPTIVE SCREWS AND CONNECTOR.
- PLACE THE WASHER IN OUTERMOST DEPRESSION IN CABLE EXIT AREA OF THE BACKSHELL AND SCREW SHELL HALVES CLOSED.

AMPHENOL PART NUMBER 17E-1724-2



| | | | |
|----------------------------|------------------------|------------|----------|
| UNLESS SPECIFIED OTHERWISE | DRAWN | DAVIE WANG | MAY31/10 |
| PRIMARY UNITS | CHECKED | L.CHAN | MAY31/10 |
| SECONDARY UNITS | I.E. | APP'D | |
| REFERENCE IN PARENTHESES | Q.A. | APP'D | |
| GENERAL TOLERANCES | DWG | APP'D | |
| 1 DECIMAL PLACE | ENG. REL. NO. | EAR 13712 | |
| 2 DECIMAL PLACES | REF. | | |
| 3 DECIMAL PLACES | THIRD ANGLE PROJECTION | | |
| ANGULAR DEGREES | DO NOT SCALE DRAWING | | |

| | | | |
|--|--------------|-------|--------|
| Amphenol Canada Corp. | | | |
| 17E SERIES PLATED PLASTIC BACKSHELL FOR D-SUB CONNECTOR WITH E SIZE SHELL (9 STD OR 15 HD CONTACTS), STRAIGHT EXIT, #4-40 THREAD, RoHS COMPLIANT | | | |
| DWG NO. | P-17E-1724-2 | | REV B |
| CODE ID NO. | DWG SIZE | SCALE | SHEET |
| 03554 | C | 3:2 | 1 OF 1 |