

PCB Sockets
Surface Mount, 2.0mm Pitch

Product Specification:

Materials and Finish

Insulator: Glass-reinforce thermoplastic, UL-94V-0 rated, color-black, resist to short term temperature in infra-red reflow phase - 260°C for 20 seconds. (See page 9 "Reflow Conditions" for detailed information)

Contact: Phosphor Bronze per QQ-B-750, plated full flash gold, full 100µ" tin/lead or selected gold in mating area; 100µ" min. tin-lead on termination area, with entire contact under-plated 50µ" min. nickel

Electrical

Contact Resistance: 30 milliohms max. at 1 ampere DC

Insulation Resistance: 1000 megohms at 500 VDC

Dielectric Withstanding Voltage: 500 VAC/rms 60Hz for one minute

Current Rating: 1 ampere per contact

Voltage Rating: 250 VAC/rms 60Hz

Mechanical

Insertion Force: 150 grams maximum per contact

Withdrawal Force: 50 grams minimum per contact

Contact Retention: 2.0 kgs minimum per contact

Durability: See page 9

Related Product Data

PC Board Layout: See page 85

Ordering Information:

G827M XX X X X X X X

PCB Socket
Surface Mount
2.0mm Pitch

Number of Positions

Single Row: 04 to 40 positions
Dual Rows: 06 to 60 positions

Mounting Style

1: Single row
2: Dual rows

Connector Style

0: Straight type
1: Right angle type

Contact Finish

0: Full flash gold
1: Flash gold
2: 10µ" gold
3: 30µ" gold
4: Tin

Connector Style

1: A type
2: B type

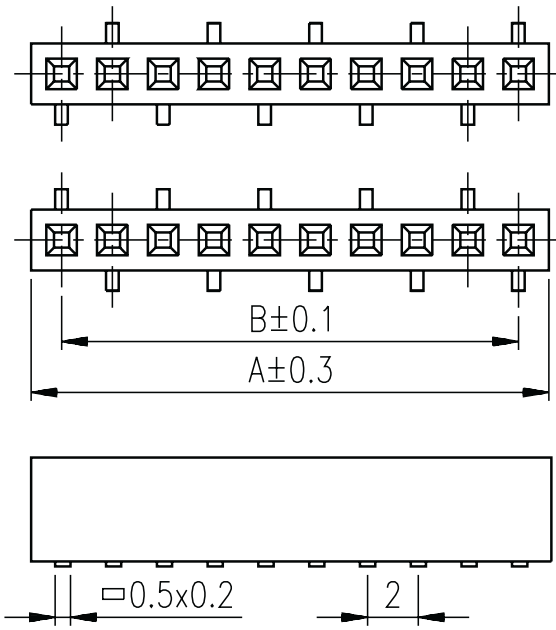
Mounting Style

0: Standard (Without locating peg)
1: With locating peg (For dual rows version only)

Variation Code

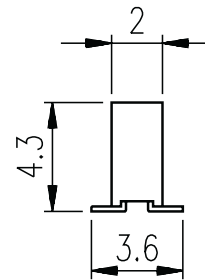
Blank: Standard

PCB Sockets
Surface Mount, Single Row, 2.0mm pitch



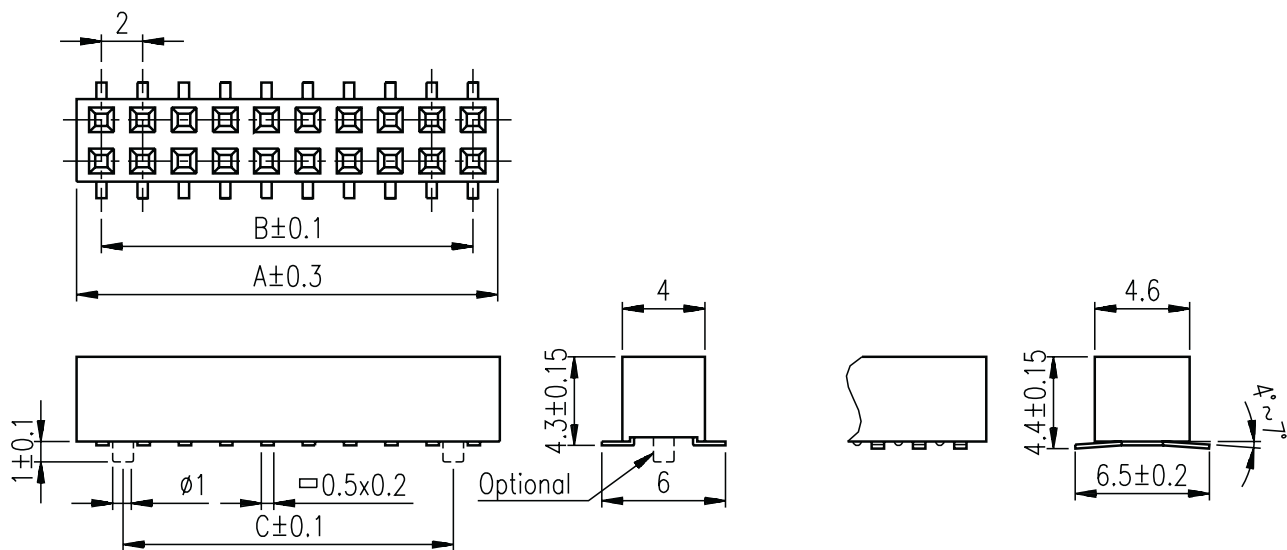
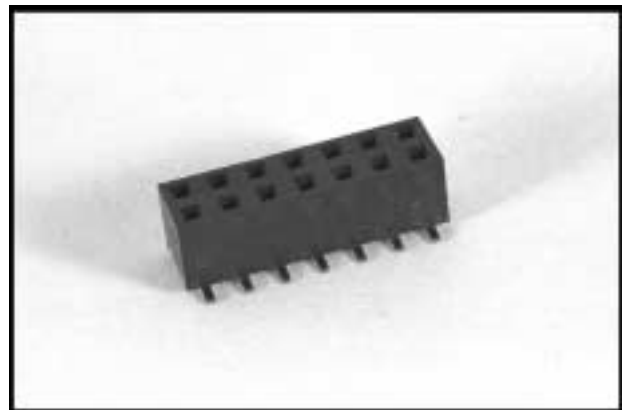
A Type

B Type



No. of Positions	Dimensions (mm)		No. of Positions	Dimensions (mm)		No. of Positions	Dimensions (mm)	
	A	B		A	B		A	B
4	8	6	17	34	32	30	60	58
5	10	8	18	36	34	31	62	60
6	12	10	19	38	36	32	64	62
7	14	12	20	40	38	33	66	64
8	16	14	21	42	40	34	68	66
9	18	16	22	44	42	35	70	68
10	20	18	23	46	44	36	72	70
11	22	20	24	48	46	37	74	72
12	24	22	25	50	48	38	76	74
13	26	24	26	52	50	39	78	76
14	28	26	27	54	52	40	80	78
15	30	28	28	56	54			
16	32	30	29	58	56			

PCB Sockets
Surface Mount, Dual Rows, 2.0mm Pitch

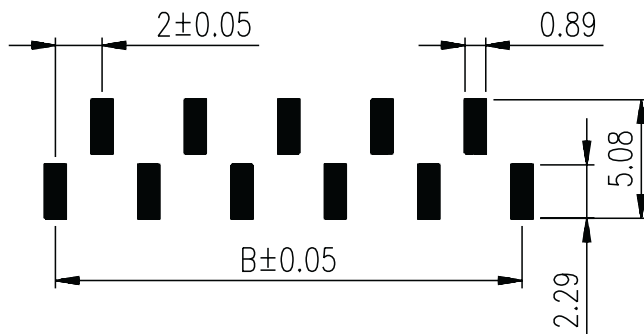


A Type

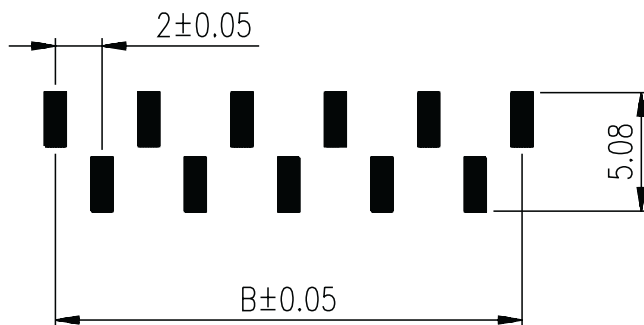
B Type

No. of Positions	Dimensions (mm)			No. of Positions	Dimensions (mm)			No. of Positions	Dimensions (mm)		
	A	B	C		A	B	C		A	B	C
6	6	4	2	26	26	24	22	46	46	44	42
8	8	6	4	28	28	26	24	48	48	46	44
10	10	8	6	30	30	28	26	50	50	48	46
12	12	10	8	32	32	30	28	52	52	50	48
14	14	12	10	34	34	32	30	54	54	52	50
16	16	14	12	36	36	34	32	56	56	54	52
18	18	16	14	38	38	36	34	58	58	56	54
20	20	18	16	40	40	38	36	60	60	58	56
22	22	20	18	42	42	40	38				
24	24	22	20	44	44	42	40				

Recommended PCB Layouts
PCB Sockets, Surface Mount, 2.0mm Pitch

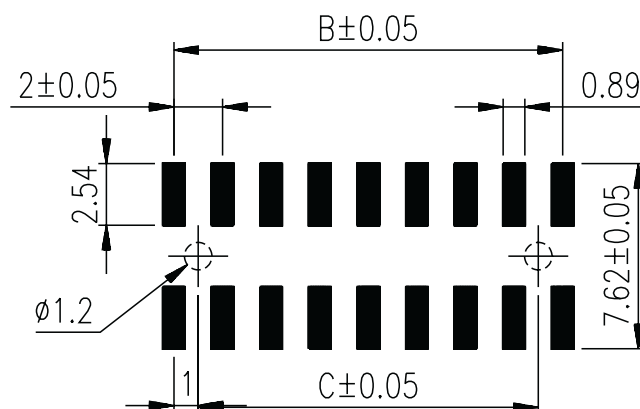


A Type



B Type

Single Row Version



Dual Rows Version