

G802 1.27mm Pin Headers PCB Mount

Board to Board system, modular, fine pitch.

Materials

Housing – 94V-0 thermoplastic
Contacts – P/B with 50µ" Ni

Electrical

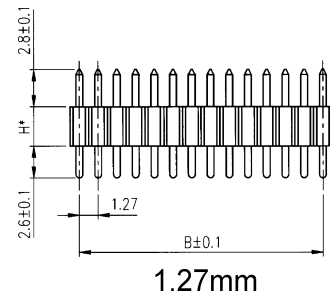
Current – 1A
Voltage – 250 VAC/rms 60Hz

Durability

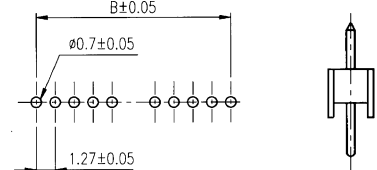
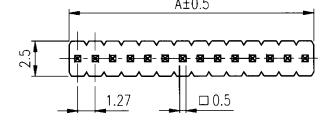
Gold Flash – 75 cycles
15µ" Gold – 150 cycles
30µ" Gold – 250 cycles

Mating Half

1.27mm SIL Rec – Page H-5
1.27x1.27mm Rec – Page H-6
1.27x2.54mm Rec – Page H-5

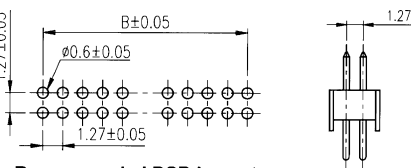
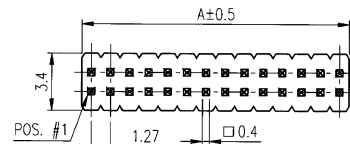


1.27mm



Recommended PCB Layout

1.27x1.27mm



Recommended PCB Layout

Part Number System:

G802 XXX X X X X

1.27mm Pin Headers
Through hole PCB Mount

NUMBER OF POSITIONS
Single row: 002 to 050
Dual row: 006 to 100

CONNECTOR STYLE
1: Straight
2: Right Angle (Request Diagrams)

MOUNTING STYLE
1: Single row
2: Double row (1.27x2.54mm)
3: Double row (1.27x1.27mm)

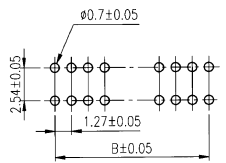
INSULATOR HEIGHT

- 1: 3mm
- 2: 2.54mm
- 3: 1.7mm
- 4: 2.64mm (single row only)

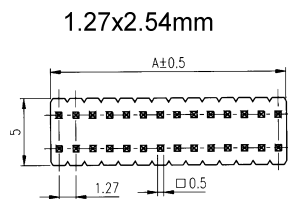
CONTACT FINISH

- 0: Full gold flash
- 1: Gold flash
- 2: 15µ" Gold
- 3: 30µ" Gold

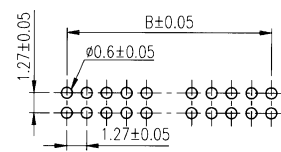
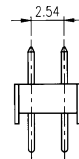
PNS-802 Rev.B



Recommended PCB Layout



1.27x2.54mm



Recommended PCB Layout

Single Row

No. of Positions	Dimensions		No. of Positions	Dimensions		No. of Positions	Dimensions		No. of Positions	Dimensions	
	A	B		A	B		A	B		A	B
2	2.54	1.27	15	19.05	17.78	27	34.29	33.02	39	49.53	48.26
3	3.81	2.54	16	20.32	19.05	28	35.56	34.29	40	50.8	49.53
4	5.08	3.81	17	21.59	20.32	29	36.83	35.56	41	52.07	50.8
5	6.35	5.08	18	22.86	21.59	30	38.1	36.83	42	53.34	52.07
6	7.62	6.35	19	24.13	22.86	31	39.37	38.1	43	54.61	53.34
7	8.89	7.62	20	25.4	24.13	32	40.64	39.37	44	55.88	54.61
8	10.16	8.89	21	26.67	25.4	33	41.91	40.64	45	57.15	55.88
9	11.43	10.16	22	27.94	26.67	34	43.18	41.91	46	58.42	57.15
10	12.7	11.43	23	29.21	27.94	35	44.45	43.18	47	59.69	58.42
11	13.97	12.7	24	30.48	29.21	36	45.72	44.45	48	60.96	59.69
12	15.24	13.97	25	31.75	30.48	37	46.99	45.72	49	62.23	60.96
13	16.51	15.24	26	33.02	31.75	38	48.26	46.99	50	63.5	62.23
14	17.78	16.51									

Double Row

No. of Positions	Dimensions		No. of Positions	Dimensions		No. of Positions	Dimensions		No. of Positions	Dimensions	
	A	B		A	B		A	B		A	B
6	3.81	2.54	30	19.05	17.78	54	34.29	33.02	78	49.53	48.26
8	5.08	3.81	32	20.32	19.05	56	35.56	34.29	80	50.8	49.53
10	6.35	5.08	34	21.59	20.32	58	36.83	35.56	82	52.07	50.8
12	7.62	6.35	36	22.86	21.59	60	38.1	36.83	84	53.34	52.07
14	8.89	7.62	38	24.13	22.86	62	39.37	38.1	86	54.61	53.34
16	10.16	8.89	40	25.4	24.13	64	40.64	39.37	88	55.88	54.61
18	11.43	10.16	42	26.67	25.4	66	41.91	40.64	90	57.15	55.88
20	12.7	11.43	44	27.94	26.67	68	43.18	41.91	92	58.42	57.15
22	13.97	12.7	46	29.21	27.94	70	44.45	43.18	94	59.69	58.42
24	15.24	13.97	48	30.48	29.21	72	45.72	44.45	96	60.96	59.69
26	16.51	15.24	50	31.75	30.48	74	46.99	45.72	98	62.23	60.96
28	17.78	16.51	52	33.02	31.75	76	48.26	46.99	100	63.5	62.23

For further variations and information, consult representative

G802A 1.27mm Board Spacer Pin Headers PCB Mount

Board to Board system, modular, fine pitch.

Materials

Housing – 94V-0 thermoplastic
Contacts – P/B with 50µ" Ni

Electrical

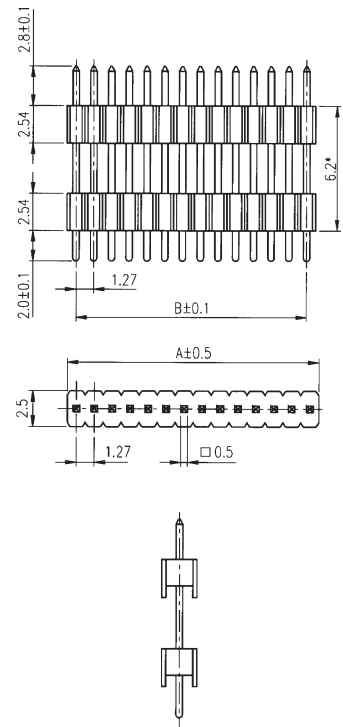
Current – 1A
Voltage – 250 VAC/rms 60Hz

Durability

Gold Flash – 75 cycles
15µ" Gold – 150 cycles
30µ" Gold – 250 cycles

Mating Half

1.27mm SIL Rec – Page H-5
1.27x2.54mm Rec – Page H-5



Part Number System:

G802A XXX X X X

1.27mm Pin Headers

Through hole PCB Mount Board Spacer

VARIATION CODE

Blank: Standard

NUMBER OF POSITIONS

Single row: 002 to 050
Dual row: 004 to 100

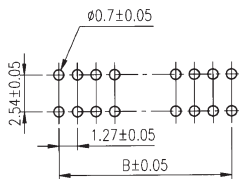
CONTACT FINISH

0: Full gold flash
1: Gold flash
2: 15µ" Gold
3: 30µ" Gold

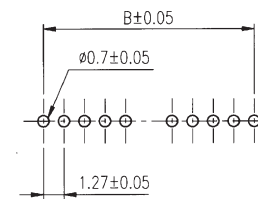
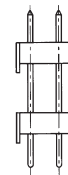
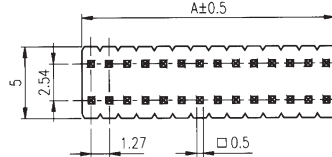
MOUNTING STYLE

1: Single row
2: Double row (1.27x2.54mm)

1.27x2.54mm



Recommended PCB Layout



Recommended PCB Layout

Single Row

No. of Positions	Dimensions		No. of Positions	Dimensions		No. of Positions	Dimensions		No. of Positions	Dimensions	
	A	B		A	B		A	B		A	B
2	2.54	1.27	15	19.05	17.78	27	34.29	33.02	39	49.53	48.26
3	3.81	2.54	16	20.32	19.05	28	35.56	34.29	40	50.8	49.53
4	5.08	3.81	17	21.59	20.32	29	36.83	35.56	41	52.07	50.8
5	6.35	5.08	18	22.86	21.59	30	38.1	36.83	42	53.34	52.07
6	7.62	6.35	19	24.13	22.86	31	39.37	38.1	43	54.61	53.34
7	8.89	7.62	20	25.4	24.13	32	40.64	39.37	44	55.88	54.61
8	10.16	8.89	21	26.67	25.4	33	41.91	40.64	45	57.15	55.88
9	11.43	10.16	22	27.94	26.67	34	43.18	41.91	46	58.42	57.15
10	12.7	11.43	23	29.21	27.94	35	44.45	43.18	47	59.69	58.42
11	13.97	12.7	24	30.48	29.21	36	45.72	44.45	48	60.96	59.69
12	15.24	13.97	25	31.75	30.48	37	46.99	45.72	49	62.23	60.96
13	16.51	15.24	26	33.02	31.75	38	48.26	46.99	50	63.5	62.23
14	17.78	16.51									

Double Row

No. of Positions	Dimensions		No. of Positions	Dimensions		No. of Positions	Dimensions		No. of Positions	Dimensions	
	A	B		A	B		A	B		A	B
4	2.54	1.27	30	19.05	17.78	54	34.29	33.02	78	49.53	48.26
6	3.81	2.54	32	20.32	19.05	56	35.56	34.29	80	50.8	49.53
8	5.08	3.81	34	21.59	20.32	58	36.83	35.56	82	52.07	50.8
10	6.35	5.08	36	22.86	21.59	60	38.1	36.83	84	53.34	52.07
12	7.62	6.35	38	24.13	22.86	62	39.37	38.1	86	54.61	53.34
14	8.89	7.62	40	25.4	24.13	64	40.64	39.37	88	55.88	54.61
16	10.16	8.89	42	26.67	25.4	66	41.91	40.64	90	57.15	55.88
18	11.43	10.16	44	27.94	26.67	68	43.18	41.91	92	58.42	57.15
20	12.7	11.43	46	29.21	27.94	70	44.45	43.18	94	59.69	58.42
22	13.97	12.7	48	30.48	29.21	72	45.72	44.45	96	60.96	59.69
24	15.24	13.97	50	31.75	30.48	74	46.99	45.72	98	62.23	60.96
26	16.51	15.24	52	33.02	31.75	76	48.26	46.99	100	63.5	62.23
28	17.78	16.51									

Various board space distances are available, consult representative

For further variations and information, consult representative

G809 1.27mm Receptacles PCB/SMT Mount

Board to Board system, modular, fine pitch.

Materials

Housing – 94V-0 thermoplastic
Contacts – P/B with 50µ" Ni

Electrical

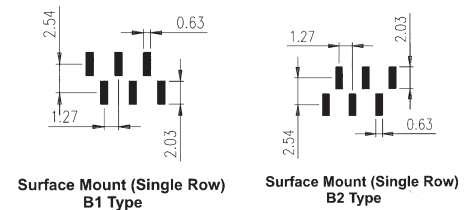
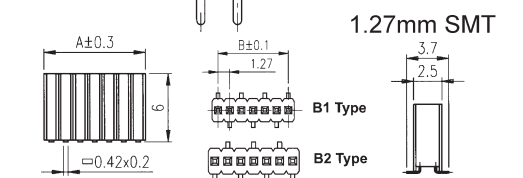
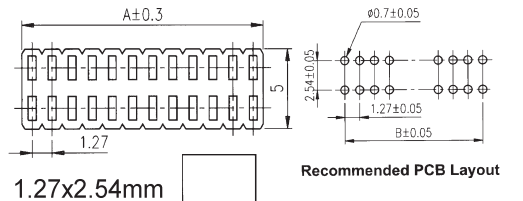
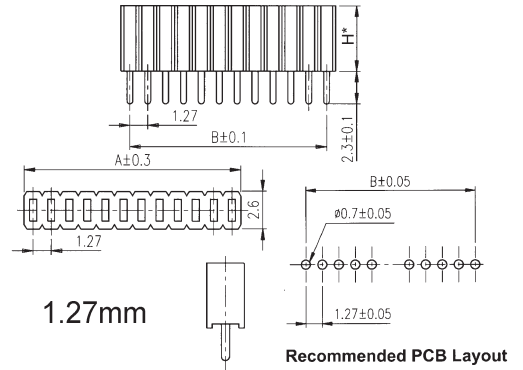
Current – 1A
Voltage – 250 VAC/rms 60Hz

Durability

Gold Flash – 75 cycles
15µ" Gold – 150 cycles
30µ" Gold – 250 cycles

Mating Half

1.27mm SIL PH – Page H-2/3/4
1.27x1.27mm PH – Page H-2/4
1.27x2.54mm PH – Page H-2/3/4



Part Number System:

G809 X XXX X X X X

1.27mm Receptacles
PCB/SMT Mount

MOUNTING STYLE

- 1: Single row
- 2: Double row (1.27x2.54mm)
- 3: Single row SMT B1 type
- 4: Single row SMT B2 type
- 5: Double row SMT (1.27x2.54mm)

VARIATION CODE

Blank: Standard

BOARD MOUNTING STYLE

- 1: Standard
- 2: With locating peg (1.27x2.54mm SMT only)

INSULATOR HEIGHT

- 1: 4.6mm (PCB only)
- 2: 8.5mm (PCB only)

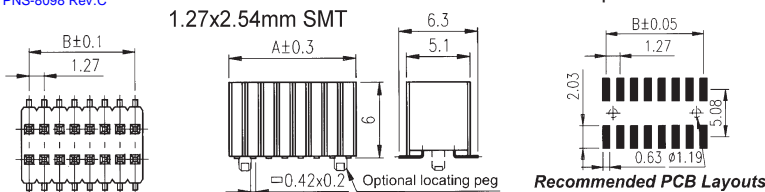
CONTACT FINISH

- 1: Gold flash
- 2: 15µ" Gold
- 3: 30µ" Gold

NUMBER OF POSITIONS

- Single row: 002 to 050
Double row: 004 to 100
Single row SMT: 003 to 050
Double row SMT: 006 to 100

PNS-8098 Rev.C



Through-hole PCB Mount											
No. of Positions		Dimensions		No. of Positions		Dimensions		No. of Positions		Dimensions	
SIL	DIL	A	B	SIL	DIL	A	B	SIL	DIL	A	B
2	4	2.54	1.27	15	30	19.05	17.78	27	54	34.29	33.02
3	6	3.81	2.54	16	32	20.32	19.05	28	56	35.56	34.29
4	8	5.08	3.81	17	34	21.59	20.32	29	58	36.83	35.56
5	10	6.35	5.08	18	36	22.86	21.59	30	60	38.1	36.83
6	12	7.62	6.35	19	38	24.13	22.86	31	62	39.37	38.1
7	14	8.89	7.62	20	40	25.4	24.13	32	64	40.64	39.37
8	16	10.16	8.89	21	42	26.67	25.4	33	66	41.91	40.64
9	18	11.43	10.16	22	44	27.94	26.67	34	68	43.18	41.91
10	20	12.7	11.43	23	46	29.21	27.94	35	70	44.45	43.18
11	22	13.97	12.7	24	48	30.48	29.21	36	72	45.72	44.45
12	24	15.24	13.97	25	50	31.75	30.48	37	74	46.99	45.72
13	26	16.51	15.24	26	52	33.02	31.75	38	76	48.26	46.99
14	28	17.78	16.51								

SMT Mount											
No. of Positions		Dimensions		No. of Positions		Dimensions		No. of Positions		Dimensions	
SIL	DIL	A	B	SIL	DIL	A	B	SIL	DIL	A	B
3	6	4.04	2.54	15	30	19.28	17.78	27	54	34.52	33.02
4	8	5.31	3.81	16	32	20.55	19.05	28	56	35.79	34.29
5	10	6.58	5.08	17	34	21.82	20.32	29	58	37.06	35.56
6	12	7.85	6.35	18	36	23.09	21.59	30	60	38.33	36.83
7	14	9.12	7.62	19	38	24.36	22.86	31	62	39.6	38.1
8	16	10.39	8.89	20	40	25.63	24.13	32	64	40.87	39.37
9	18	11.66	10.16	21	42	26.9	25.4	33	66	42.14	40.64
10	20	12.93	11.43	22	44	28.17	26.67	34	68	43.41	41.91
11	22	14.2	12.7	23	46	29.44	27.94	35	70	44.68	43.18
12	24	15.47	13.97	24	48	30.71	29.21	36	72	45.95	44.45
13	26	16.74	15.24	25	50	31.98	30.48	37	74	47.22	45.72
14	28	18.01	16.51	26	52	33.25	31.75	38	76	48.49	46.99

For further variations and information, consult representative

