

Now you're connected!

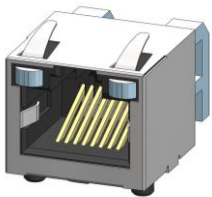
About Amphenol

Commercial Products

Amphenol's commercial connector products are used in a variety of end user applications including networking, telecom, server & computer, storage & HDD, consumer electronics and entertainment, professional audio & Industrial & Military/Aerospace.

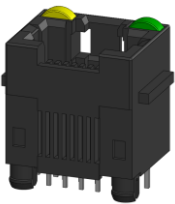
Related Products

RJSSE

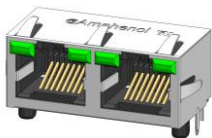


P/N RJSSE-5381 SHOWN
SINGLE PORT, 8 POSITION,
WITH SHIELD AND LIGHT PIPE

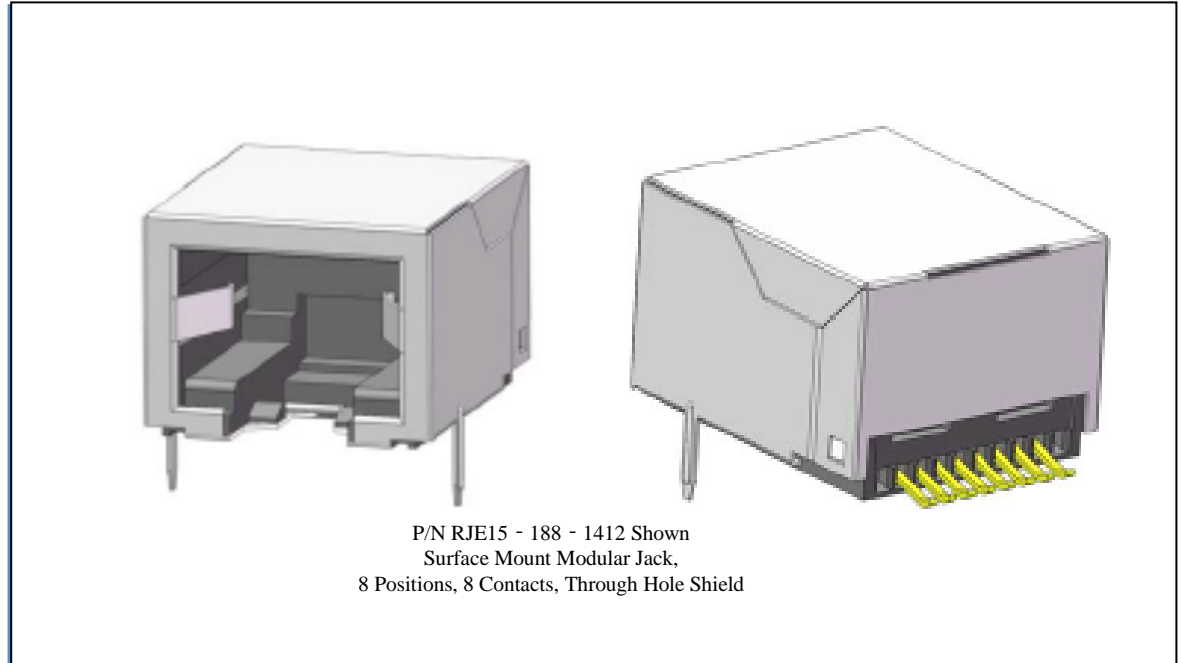
RJHSE



P/N RJHSE-3081 SHOWN
SINGLE PORT VERTICAL MOUNT,
NO SHIELD, WITH LEDS



P/N RJHSE-5385-02 SHOWN
TWO PORT REGULAR MOUNT,
WITH SHIELD AND LEDS



P/N RJE15 - 188 - 1412 Shown
Surface Mount Modular Jack,
8 Positions, 8 Contacts, Through Hole Shield

Overview

This product specification defines the general use and performance parameters for Amphenol's RJE15 series of modular jacks.

Availability: Single port, 4P4C, 6P6C, 8P8C, 10P10C available with boardlock and shielding option.

Usage

The RJE15 series of modular jack supports Ethernet Protocols.

Applications

Intended for use in applications such as:
Networking & Telecom

- Wireless (WiMAX)
- Network servers
- Hubs, routers, switches

Office & Home Equipment

- PC's, Laptops, Copiers/Printers
- Telephones, modems
- Surge Protectors
- ATMs, Vending Machines

Consumer Goods

- Security Systems
- Set Top Boxes
- Video Game Systems

Miscellaneous

- Multi-Media Equipment
- Industrial Equipment
- POS Terminals

Consumer Goods

Revision date: June 01, 2017

Page 1 of 2

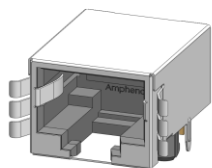
Now you're connected!

About Amphenol Commercial Products

Amphenol's commercial connector products are used in a variety of end user applications including networking, telecom, server & computer, storage & HDD, consumer electronics and entertainment, professional audio & Industrial & Military/Aerospace.

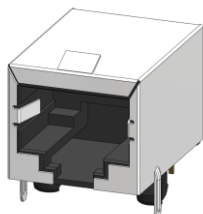
Related Products

RJULE



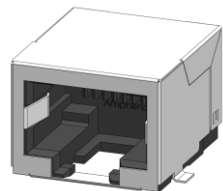
P/N RJULE-4X182-01 SHOWN
SINGLE PORT REGULAR MOUNT,
STANDARD SHIELD WITH SMT

FRJAE



P/N FRJAE-418 SHOWN
SINGLE PORT, 8 POSITION,
WITH FERRITE FILTER AND
SHIELD (FRONT TABS)

RJLSE



P/N RJLSE-41181-01 SHOWN
SINGLE PORT REGULAR MOUNT,
STANDARD SHIELD WITH SMT

Electrical Characteristics

Contact resistance:	25 mΩ max.
Insulation resistance:	1000 MΩ minimum at 500V DC for 2 minutes max.
Current rating:	1.5 Amps
Voltage rating:	125 Volts AC
DWV	1000 VAC, 60 Hz. 1 min.

Mechanical Characteristics

Mating connector insertion force: 5.0 lbs. Maximum.
Mating connector pull retention force: 20 lbs Minimum.
Durability: 750 mating & unmating

Recommended soldering temperature: Suitable for IR Reflow

Operating temperature: -40° C to +70° C

Material Requirements

RJE15 connectors are RoHS compliant.

Unless otherwise specified, the materials for each component shall be:

Insulator:

- High temp thermoplastic. Complies with UL 94V-0, Black color.

Contacts:

- Phosphor Bronze hard temper with gold thickness options (6μ", 15μ", 30μ", 50μ") over 50μ" minimum Nickel on contact mating area.
- 100μ" minimum matte tin or gold flash plating on tail area.

Shield:

- Copper Alloy, Nickel plating over all

Moisture Sensitivity Level

The Moisture Sensitivity Level for RJE15 connectors is MSL-2a.

Available Documents

Drawing Numbers:

P-RJE15-144-0X10	SINGLE-PORT MODULAR JACK, 4 POSITIONS, 4 CONTACTS, SURFACE MOUNT, WITHOUT SHIELD-RoHS COMPLIANT
P-RJE15-166-1X10	SURFACE MOUNT MODULAR JACK, SINGLE PORT, LOW PROFILE, 6 POSITIONS, 6 CONTACTS, SHIELDED-RoHS COMPLIANT
P-RJE15-188-0X10	SURFACE MOUNT MODULAR JACK 8 POSITIONS, 8 CONTACTS, WITHOUT SHIELD-RoHS COMPLIANT
P-RJE15-188-1X10	SURFACE MOUNT MODULAR JACK, 8 POSITIONS, 8 CONTACTS, SHIELDED-RoHS COMPLIANT
P-RJE15-188-1X10-T	SURFACE MOUNT MODULAR JACK, 8 POSITIONS, 8 CONTACTS, SHIELDED, T&R PACKAGING- RoHS COMPLIANT
P-RJE15-1AA-1X10	SURFACE MOUNT MODULAR JACK, SINGLE PORT, LOW PROFILE, 10 POSITIONS, 10 CONTACTS, SHIELDED-RoHS COMPLIANT

Contact factory or Authorized Amphenol representative for additional configurations

Amphenol Canada Corp.
605 Milner Avenue
Toronto, Ontario, Canada, M1B 5X6
+1 416 291 4401

www.amphenolcanada.com

Copyright © Amphenol Corporation 2013 • All rights reserved

Page 2 of 2

Amphenol

THIS DOCUMENT CONTAINS PROPRIETARY INFORMATION AND SUCH INFORMATION MAY NOT BE DISCLOSED TO OTHERS FOR ANY PURPOSE OR USED FOR MANUFACTURING PURPOSES WITHOUT WRITTEN PERMISSION FROM AMPHENOL CANADA CORP.